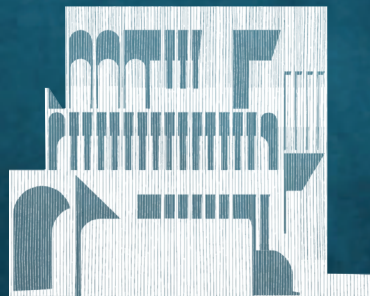




 *PUERTO POR MARÍA*

PUNTA MORELOS



A LA VENTA

maria@puertopormaria.com

A LA VENTA

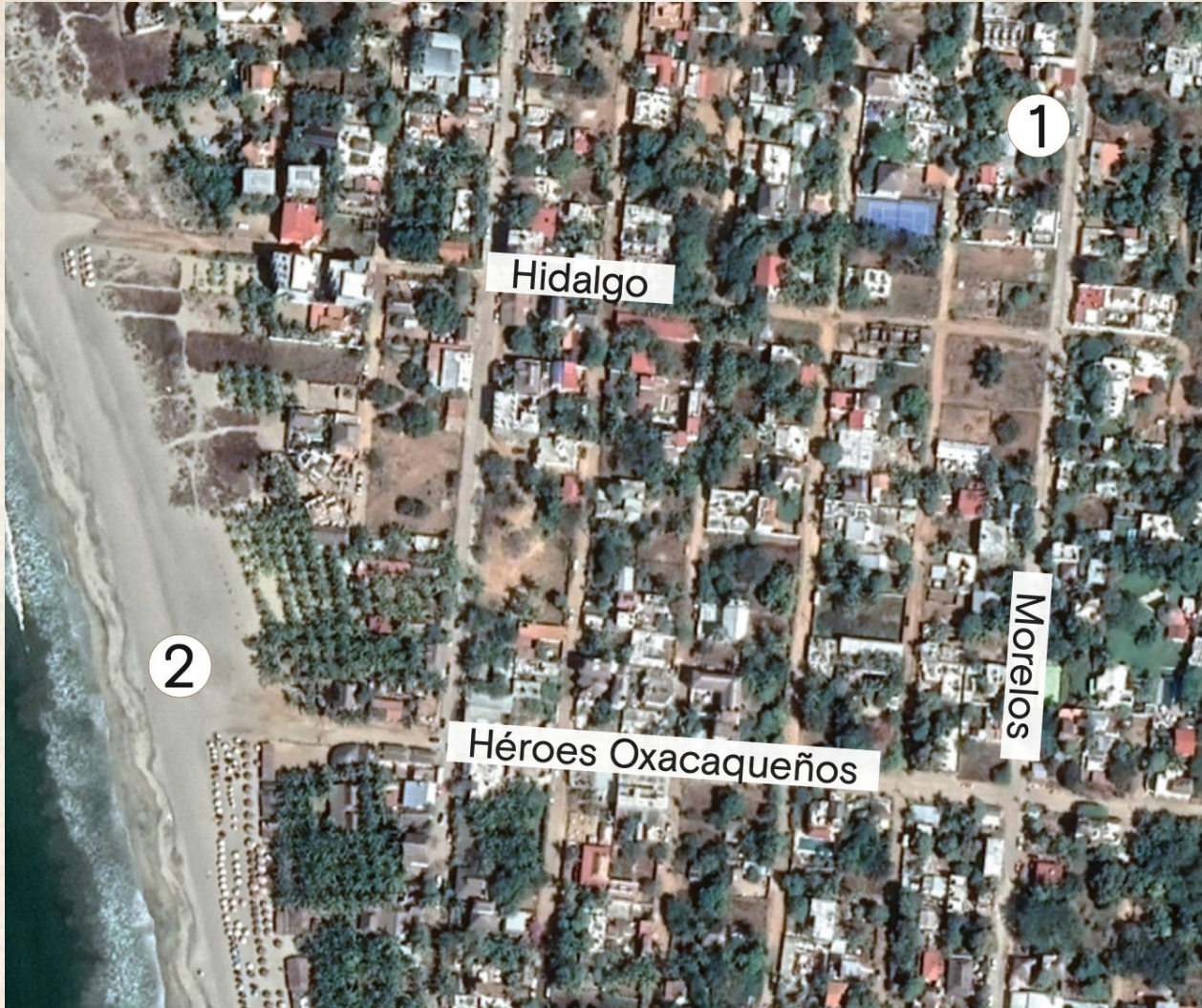
UBICACIÓN



2. Aeropuerto Internacional de Puerto Escondido
3. Playa Carrizalillo
4. Zicatela
5. Carretera Costera del Pacífico

A LA VENTA

UBICACIÓN



1. Ubicación de predio
2. Punta Zicatela

📍 **MORELOS, BRISAS**
La Zicatela, PE, Oaxaca

A LA VENTA

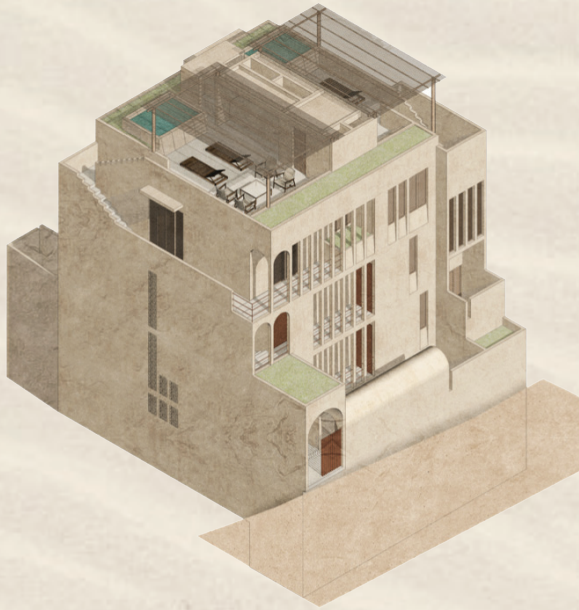
CONDOMINIO



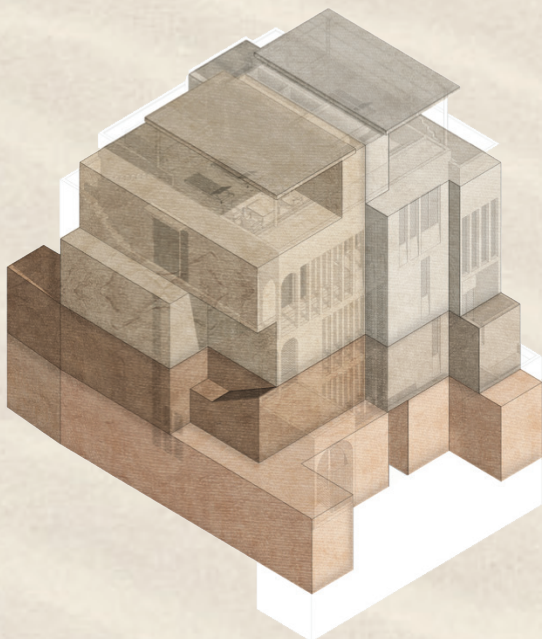
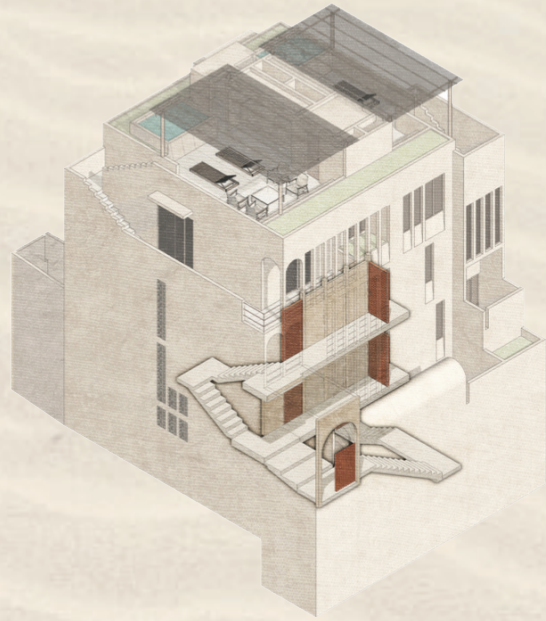
A LA VENTA

CONJUNTO

Conjunto



Circulaciones y escaleras



Distribución de departamentos




1A	193.30 m ²
2A	70.88 m ²
2B	59.84 m ²
3A	197.19 m ²
3B	168.69 m ²

A LA VENTA

DEPARTAMENTO 1A



VENDIDO

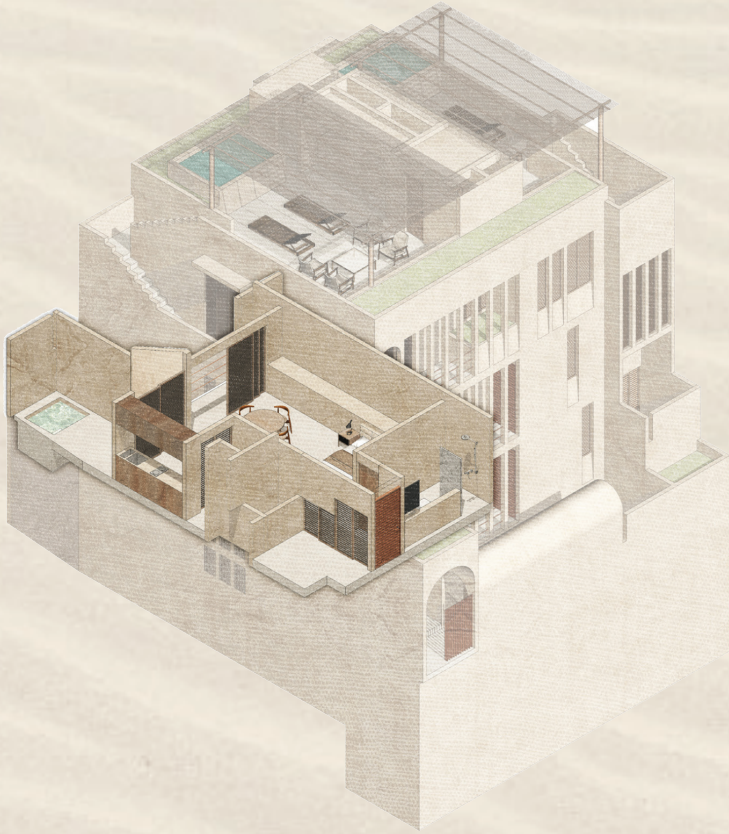
 Interior 152.98 m²
 Terraza 40.32 m²
 Total 193.30 m²






1. Sala
2. Comedor
3. Cocina
4. Recámara I
5. Recámara II
6. Recámara III
7. Cuarto de lavado
8. Baño
9. Terraza

A LA VENTA

DEPARTAMENTO 2A



-  Interior 55.90 m²
-  Terraza 14.98 m²
-  Total 70.88 m²






1. Cocina - Comedor
2. Recámara
3. Baño
4. Cuarto de lavado
5. Bodega
6. Terraza
7. Balcón

A LA VENTA

DEPARTAMENTO 2B



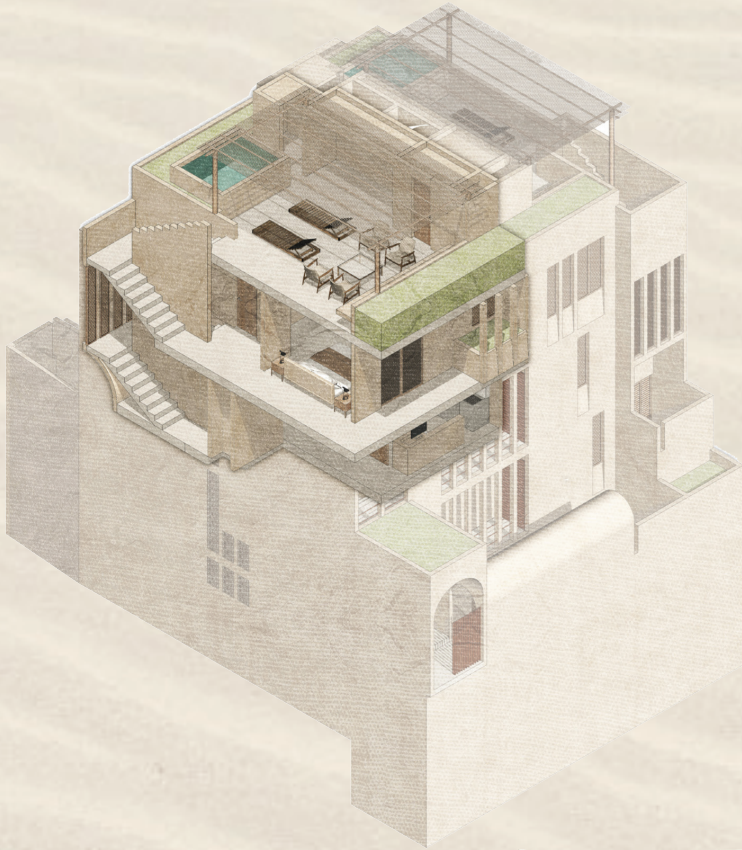
-  Interior 49.02 m²
-  Terraza 10.82 m²
-  Total 59.84 m²






1. Cocina - Comedor
2. Recámara
3. Baño
4. Cuarto de lavado
5. Bodega
6. Terraza
7. Balcón

A LA VENTA

DEPARTAMENTO 3A



-  Interior 110.41 m²
-  Terraza 86.78 m²
-  Total 197.19 m²



1. Sala - Comedor
2. Cocina
3. Medio baño
4. Cuarto de lavado

A LA VENTA

DEPARTAMENTO 3A



- 4. Cuarto de lavado
- 5. Recámara I
- 6. Recámara II
- 7. Baños
- 8. Balcón






- 9. Terraza
- 10. Baño Terraza

A LA VENTA

DEPARTAMENTO 3B



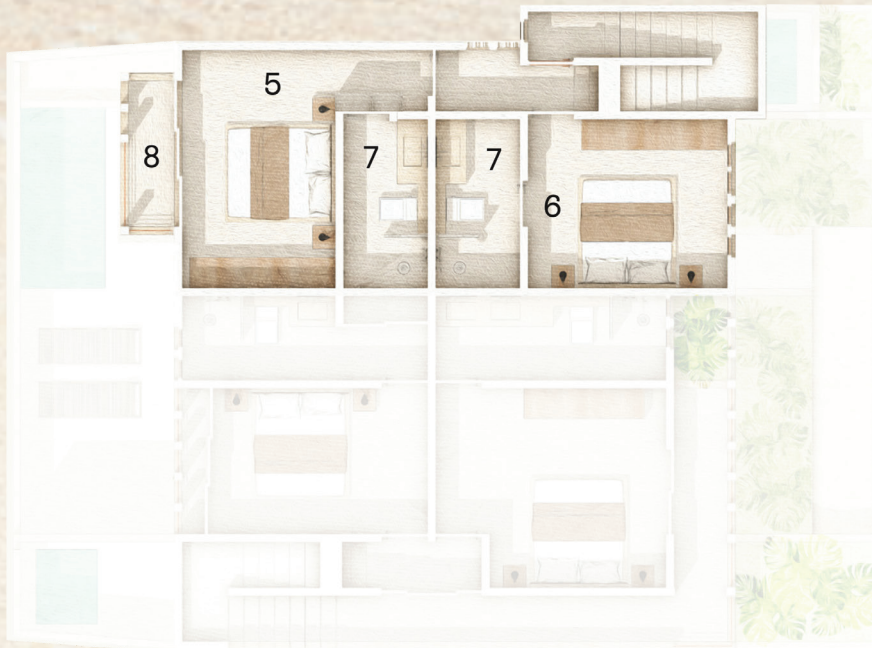
-  Interior 104.40 m²
-  Terraza 64.29 m²
-  Total 168.69 m²



1. Sala - Comedor
2. Cocina
3. Medio baño
4. Cuarto de lavado
8. Balcón

A LA VENTA

DEPARTAMENTO 3B



- 5. Recámara I
- 6. Recámara II
- 7. Baños
- 8. Balcón



- 9. Terraza
- 10. Baño Terraza

A LA VENTA



A LA VENTA



A LA VENTA



A LA VENTA



A LA VENTA



A LA VENTA



A LA VENTA



An aerial photograph of a surfer riding a wave. The surfer is a small white silhouette in the center of the frame, riding a white wave that is breaking from the top of the image. The water is a deep blue color. The overall scene is serene and captures a moment of outdoor recreation.

 **PUERTO** *POR MARÍA*

PUNTA MORELOS

GRACIAS

maria@puertopormaria.com